

CHUTE MAINTENANCE AND SERVICE

GENERAL MAINTENANCE

-Ensure that the rubber stripping on the end of each flap is present. This stripping helps absorb the shock of operation and increases the life of flaps.

-Lubricate the bronze bushings that the flapper shaft passed through with a general purpose lubricant such as 3-in-1 or WD40. This should be done every 500 hours of operation under normal use, or every 250 hours of operation if used with an in-line oven.

-Adjust solenoids as soon as you hear a loud buzzing when the flap is activated. This buzzing is a result of a solenoid out of adjustment. If immediate attention is not given, the solenoid will burn out and the gage may be damaged.

ADJUSTMENT OF AC SOLENOIDS

-Before shipment, the solenoids are adjusted for proper operation. During normal use, these solenoids might come out of adjustment. This out of adjustment condition has one of two consequences. One, the flapper will not fully close when the solenoid is energized. Two, there will be a loud buzzing when the solenoid is energized. This condition of the solenoid buzzing will seriously shorten the life of the solenoid and associated circuitry both in the gage and the chute. If either of these two conditions exists, the following adjustments should be made.

-Adjustment of three way chute solenoids and the long and short solenoids can be accomplished using the sort output of a Mean Machine, Eurogage or Merlin gage. Adjustment of the very long and very short solenoids of a five way chute can be accomplished by using the same output and a jumper wire on the Mean Machine and Eurogage. The Merlin gage can check the chute in the hardware test as is.

WARNING

THERE IS A RISK OF ELECTRIC SHOCK WHICH MAY CAUSE PERSONAL INJURY OR DEATH. REMOVAL OF COVER AND SOLENOID ADJUSTMENTS SHOULD BE DONE BY QUALIFIED PERSONNEL

CAUTION

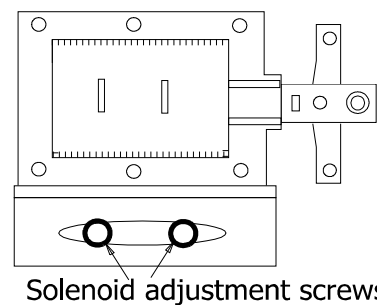
DAMAGE TO SNUBBER CIRCUIT BOARD MAY RESULT BY INADVERTENTLY SHORTING SOLENOIDS TO GROUND

CHUTE SOLENOID ADJUSTMENT

1. Remove the solenoid cover. Loosen solenoid adjustment screws (see fig1) on the solenoid to be adjusted

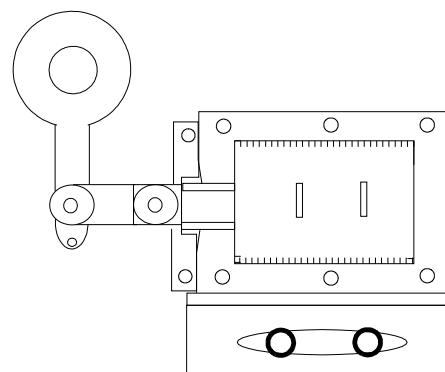
2. To energize the solenoid;
 - Plug the 3pin cable into the sort output of the gage.
 - Put the gage into HARDWARE TEST mode (See gage manual)
 - For MERLIN and EUROGAGE-Hold the “ENT” key and rotate the sort knob until the solenoid is energized.
 - For MEAN MACHINE-rotate the sort knob until the solenoid is energized

Fig 1



3. Move the solenoid in the horizontal plane until the flap **just makes contact** with the opposite side, but not enough to cause a loud buzzing of the solenoid. Some slight tilting of the solenoid may be necessary to achieve this condition. For proper adjustment, ensure that no part of the solenoid is touching the solenoid plate. Remove any excess plastic material from the solenoid with a small fine tooth file.

Fig 2



NOTE: When Flap is fully closed, rocker arm should be in the 6:00 position and the linkage should be horizontal.